

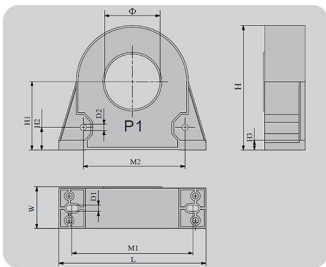
CT212 series products are made of flame-retardant ABS engineering plastics and combined with epoxy resin casting technology, which have excellent waterproof and moisture-proof properties. They are made of nano-crystalline soft magnetic materials or silicon steel materials, with high precision, good linearity, compact structure, small appearance, easy installation, and are widely used in power distribution systems.

This series of secondary signal products can be mA-level current or voltage signals. Some products can also be 5A/1A standard current, which can fully meet the input requirements of the equipment.

The product can be output by terminal or wire directly, and RVVP wire can be used as needed to improve anti-interference ability.



- High precision: the precision can reach 0.1 level
- High overload multiple, up to 12 times.
- Strong versatility and good interchangeability
- Multiple specifications and varieties, suitable for a wide current range
- Two fixing methods, reliable and flexible fixing methods
- Flexible design, measurable and protective



MODEL	TYPICAL DATA		ACCURACY	OVERLOAD	PRODUCT SIZE(MM)					MOUNTING SIZE(MM)					
					Ø	L	W	H	H1	M1	D1	M2	D2	H2	H3
CT212063	20A/10mA	RL=100Ω	0.1	1.2	12	59	21	44	25	51	5	/	/	/	2
	50A/20mA	RL=100Ω	0.1	1.2											
CT212163	100A/50mA	RL=100Ω	0.1	1.2	20	68	22	58	33	56	4.5	50	5.5	10	5
	150A/50mA	RL=100Ω	0.1	1.2											
CT212263	50A/20mA	RL=100Ω	0.1	1.2	25	80	23	70	40	66	5	57	4.3	12.5	5.5
	200A/50mA	RL=100Ω	0.1	1.2											
CT212363	100A/50mA	RL=100Ω	0.1	1.2	35	100	30	91	54	83	5	75	5	16	5.5
	200A/50mA	RL=50Ω	0.1	1.2											
	300A/100mA	RL=50Ω	0.1	1.2											
CT212463	100A/50mA	RL=50Ω	0.1	1.2	45	120	34	102	56	98	5	83	5	18.5	8
	200A/100mA	RL=50Ω	0.1	1.2											
	400A/200mA	RL=50Ω	0.1	1.2											
CT212563	200A/100mA	RL=50Ω	0.1	1.2	55	150	35	126	71	125	5	119	5	23.5	10
	400A/200mA	RL=50Ω	0.1	1.2											
	600A/200mA	RL=50Ω	0.1	1.2											
CT212663	400A/200mA	RL=20Ω	0.1	1.2	72	175	42	150	81	150	6.5	134	6.5	25.7	12.2
	800A/200mA	RL=20Ω	0.1	1.2											
	1000A/200mA	RL=20Ω	0.1	1.2											